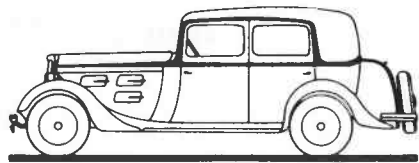
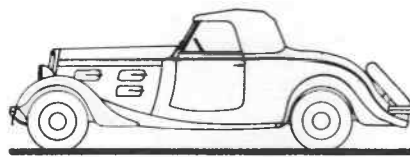


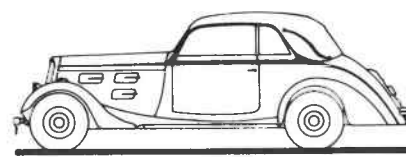
**CARROSSERIES 601**



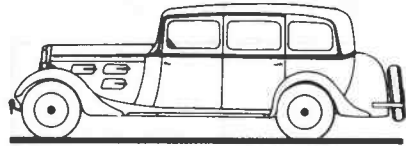
**N9L**



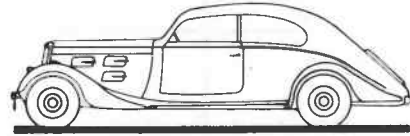
**TR9**



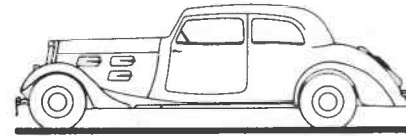
**CD9**



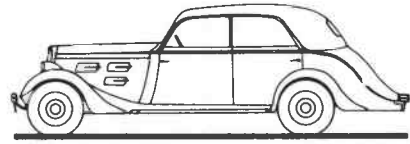
**N9F**



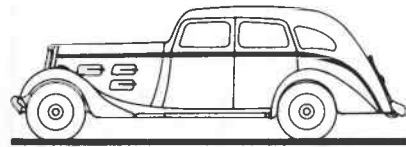
**BA9\_BA9r**



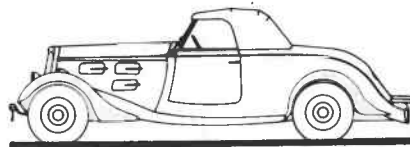
**BV9\_BV9r**



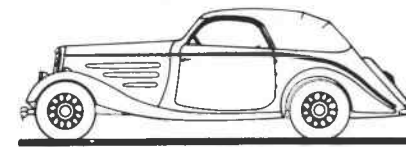
**NP9**



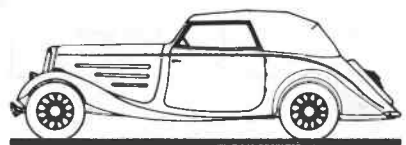
**A9L**



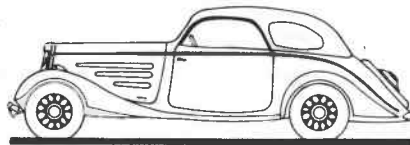
**TR9r**



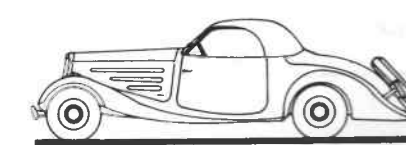
**CL9**



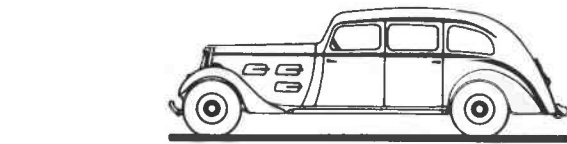
**CL9r**



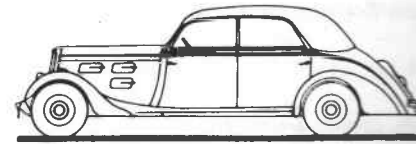
**CG9r**



**CE2**



**A9F**



**NP9r**

**601 C**

| SYM-BOLE | DESIGNATION DES CARROSSERIES           | POIDS     |             |                   | ENCOMBREMENT |       |       |
|----------|--|-----------|-------------|-------------------|--------------|-------|-------|
|          |  | Châss. nu | Carr. seule | Total             | Long.        | Larg. | Haut. |
| N9L      | Berline 4 p. 4/5 pl.                   | 802       | 500         | 1302              | 4,60         | 1,60  | 1,65  |
| TR9      | Roadster 2 p. 2/4 pl. luxe             | 802       | 376         | 1178 { 587<br>591 | 4,60         | 1,60  | 1,59  |
| CD9      | Coach décapotable golf 2 p. 4 pl. luxe | 802       | 451         | 1253 { 588<br>665 | 4,75         | 1,60  | 1,65  |

**601 L**

|     |                                  |     |     |                   |      |      |      |
|-----|----------------------------------|-----|-----|-------------------|------|------|------|
| N9F | Limousine familiale 6/7 pl.      | 851 | 529 | 1380              | 4,93 | 1,60 | 1,67 |
| BA9 | Coach sport 2 p. 4 pl. luxe      | 851 | 455 | 1306              | 5,05 | 1,58 | 1,60 |
| BV9 | Coach profilé 2 p. 4 pl. luxe    | 851 | 496 | 1347 { 644<br>703 | 4,90 | 1,60 | 1,60 |
| NP9 | Berline profilée 4 p. 4 pl. luxe | 851 | 547 | 1398 { 644<br>754 | 5,08 | 1,60 | 1,66 |

**601 D**

|       |   |     |     |                   |      |      |      |
|-------|---|-----|-----|-------------------|------|------|------|
| A9L   | Limousine 4 p. 6 gl. 4/5 pl.              | 855 | 472 | 1327              | 4,80 | 1,59 | 1,60 |
| TR9r  | Roadster 2 p. 2/4 pl.                     | 832 | 395 | 1227 { 590<br>637 | 4,70 | 1,60 | 1,60 |
| CL9   | Coupé décapotable 2 p. 5 pl. grand luxe   | 832 | 484 | 1316 { 603<br>713 | 4,75 | 1,61 | 1,58 |
| CL9r2 | Coupé décapotable 2 p. 5 pl. grand luxe   | 832 | 486 | 1318 { 597<br>721 | 4,75 | 1,61 | 1,58 |
| CG9r  | Coach golf 2 p. 4 pl. toit ouvrant        | 832 | 540 | 1372 { 625<br>747 | 4,75 | 1,61 | 1,58 |
| CE2   | Coupé transformable électrique 2 p. 3 pl. | 832 | 604 | 1436 { 604<br>832 | 4,94 | 1,63 | 1,53 |

**601 DL**

|      |                             |     |     |                   |      |      |      |
|------|-----------------------------|-----|-----|-------------------|------|------|------|
| A9F  | Limousine familiale 6/7 pl. | 889 | 496 | 1385              | 5,15 | 1,59 | 1,60 |
| NP9r | Berline aérodynamique 4 pl. | 889 | 540 | 1429 { 658<br>771 | 5,10 | 1,60 | 1,64 |
| BV9r | Coach aérodynamique 4 pl.   | 889 | 482 | 1371 { 653<br>718 | 5,00 | 1,60 | 1,60 |
| BA9r | Coach fuselé 4 pl.          | 889 | 455 | 1384 { 648<br>736 | 5,05 | 1,60 | 1,60 |